

46-715 Filling and bleeding power steering pump

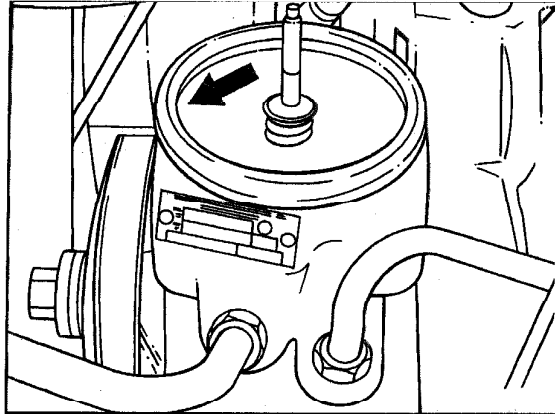
VT 49, ZL 49

Oil level with oil cold (ambient temperature approx. 20 °C):

The supply reservoir is properly filled when the oil level is 6-8 mm below the embossed or cast mark (arrow).

Oil level with oil at operating temperature (approx. 80 °C):

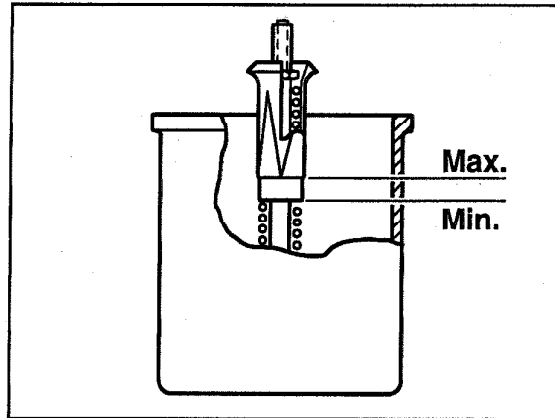
The supply reservoir is properly filled when the oil level is at the embossed or cast mark.



P46-2364-13

VT 161, ZL 161, VTP 162

The supply reservoir is properly filled when the oil (20-50 °C) is between the min. and max. marks 28-36 mm below the edge of the reservoir.



P46-0019-13

Note

Observe following when filling and bleeding the power steering pump following repair to the servo system:

- Before starting engine fill power steering pump with specified steering gear oil up to approx. 10 mm below top edge of reservoir.
- Replenish oil extracted while starting the engine immediately. The power steering pump should not run empty or suck air under any circumstances.

46-715 Filling and bleeding power steering pump

- Turn steering all the way to the left and to the right a number of times so that the system can bleed itself.
- Correct oil level in supply reservoir.

Do not exceed maximum oil level; otherwise oil would escape from the bleed fitting when hot.

- Check system for leakage. It is not necessary to replace the pump if a light film of oil is present on the radial sealing ring or on the housing separation surfaces.
- On vehicles with tandem pump (level control, ASD) bleed the level control section separately (32-630).